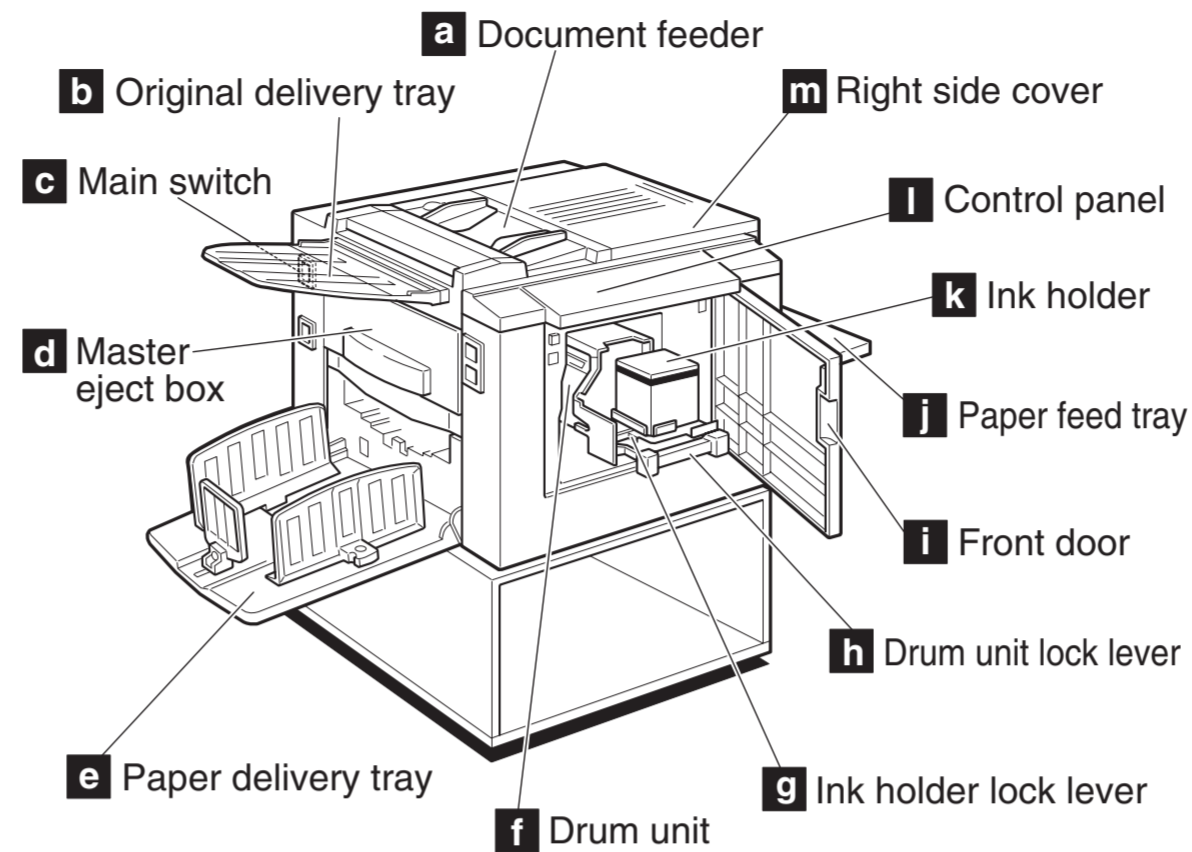
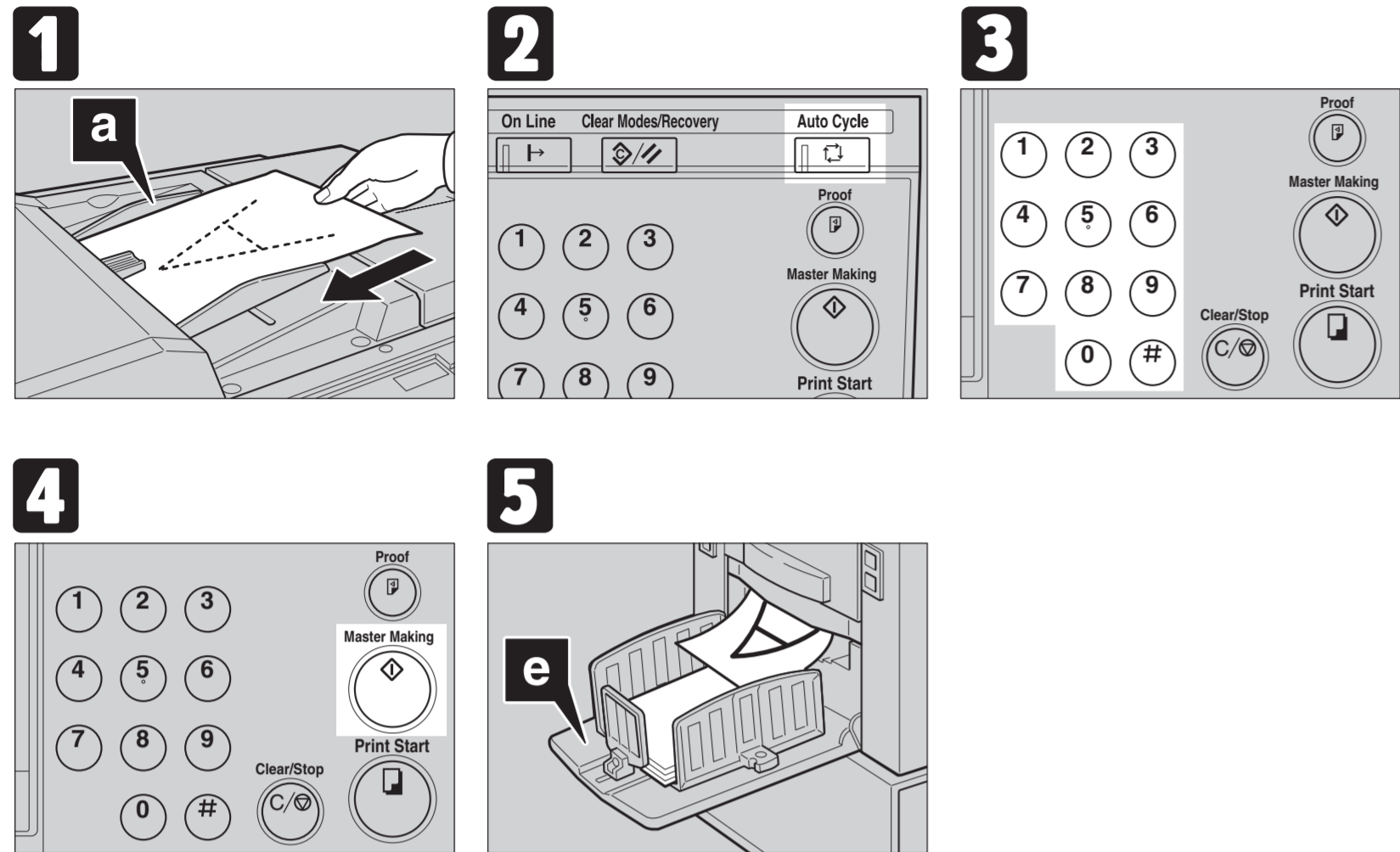
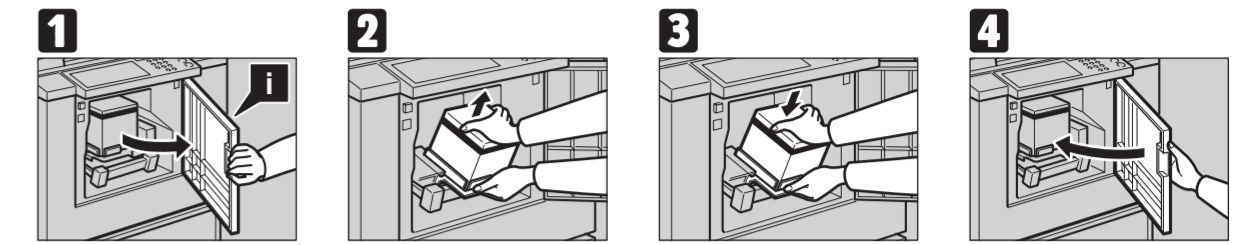


# OPERATING INSTRUCTION CHART

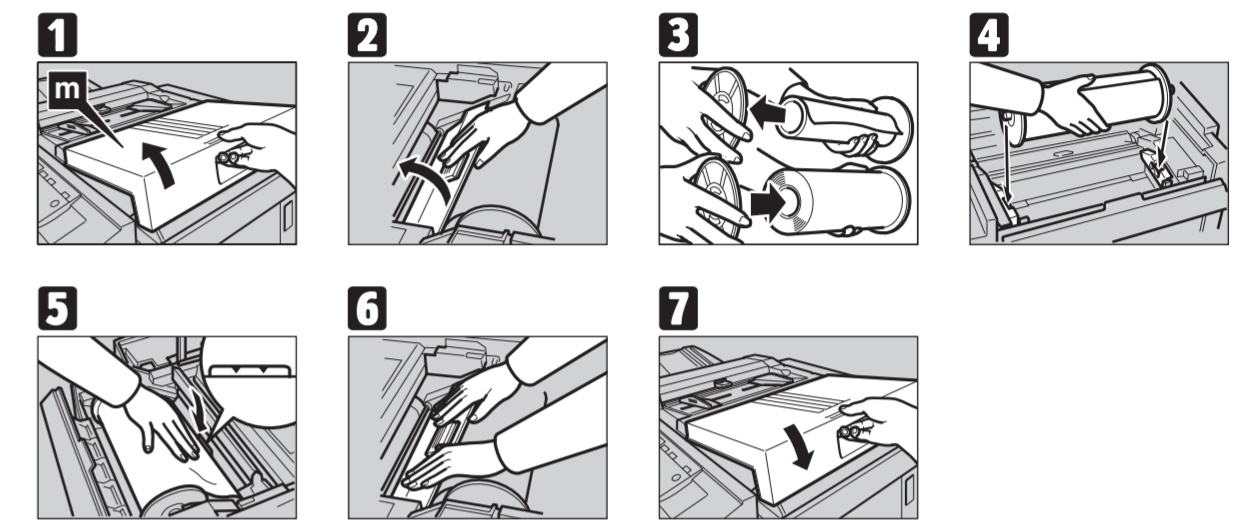
## Auto Cycle Printing (see p.28)



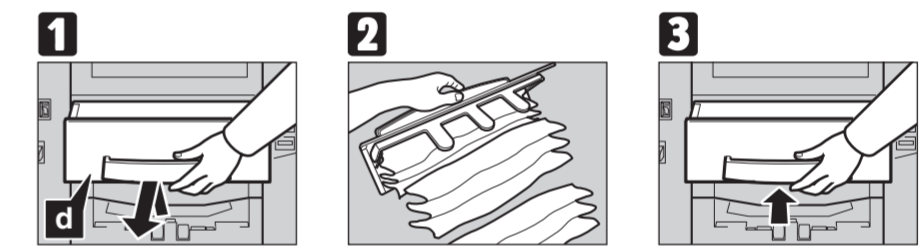
## Load New Ink (see p.39)



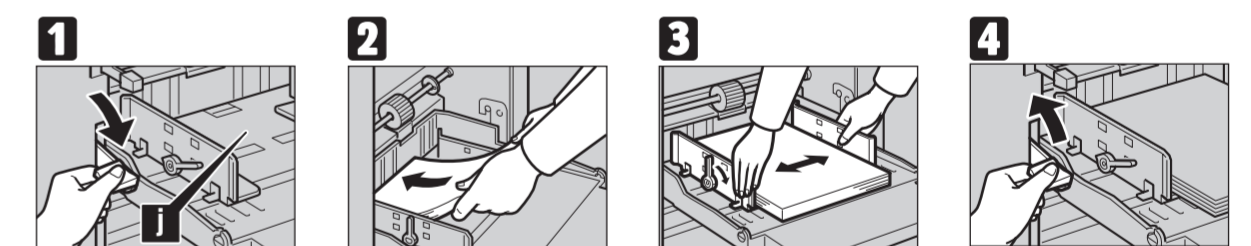
## Load New Master Roll (see p.41)



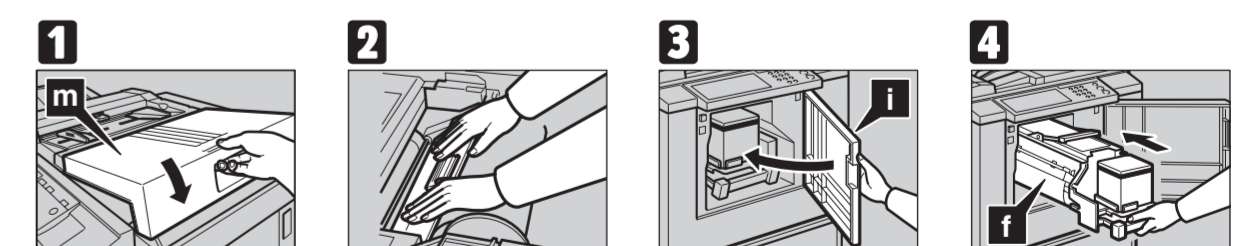
## Empty the Master Eject Box (see p.57)



## + A Load More Paper (see p.37)



## Cover or Unit Door is Open (see p.55)



## Clearing Misfeeds (see p.45)

